

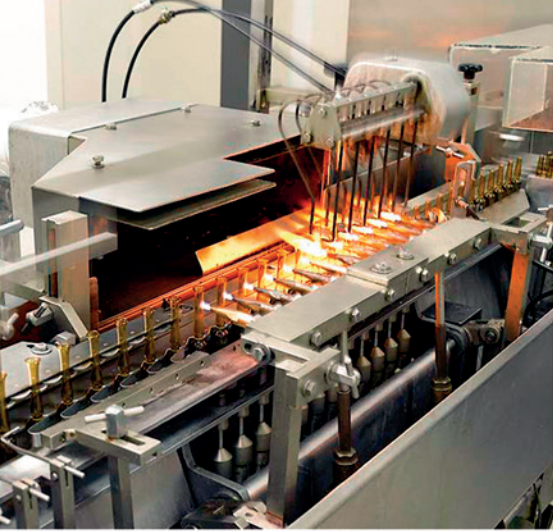




**Simildiet Laboratorios** is a Spanish laboratory established in 1993. Our main activity is the research, development, manufacture and commercialization of phytotherapeutic and cosmeceutical products with tested therapeutic action, free from side effects and contraindications, as well as products which may be applied by different techniques used in the Aesthetic Medicine.



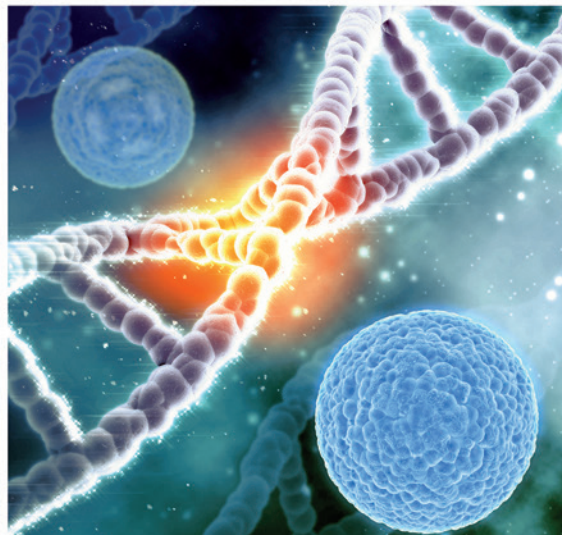
**Simildiet** has based the development of its activity on the customer service, maintaining a close collaboration with the technical, human and commercial areas. The main objective of the technical-commercial team is to collect the customer needs and inquiries, contributing to create an extra value to the established relationship.



We seek out for the maximum quality in our products and the total absence of iatrogenic events. From the first steps of the development of a specialised product, we demand the closest attention to all the details defining the concept of maximum quality.

For this reason, we are regularly subject of quality controls:

- Aesthetic products registered within the Spanish Agency of Medicines and Medical Devices (AEMPS).
  - ISO 22716:2008 – GMP
- Products notified to the Cosmetic Products Notification Portal
  - Notification of Food Supplements in Brussels.





# Xtra

## HAIR RESTORER

FORTALECEDOR DEL CABELLO  
HAIR STRENGTHENING



**SIMILDIEI**  
LABORATORIOS

5 ml  
5 ml



# Xtra

## FACELIFT

Contiene 5 viales x 5 ml  
Contains 5 vials x 5 ml

SIM  
LABO



# Xtra

## FACE ANTIAGING

Contiene 5 viales x 5 ml  
Contains 5 vials x 5 ml



**SIMILDIEI**  
LABORATORIOS

LABORATORIOS

SKIN FIRMING  
(Face & Body)



# Xtra

## SKIN REPAIR

(Face & Body)



LABORATORIOS

---

# *Xtra* line

The *Xtra* line represents a big step forward in **SIMILDIET™**'s dermocosmetic development.

Combining our traditional active principles with biomimetic peptides has allowed us to position ourselves in the borderline of the most advanced cosmeceuticals. The use of biomimetic peptides involves acting in the most inner mechanisms of the cell physiology.

**Biomimetic peptides** interact as biocatalyzers, they inhibit and participate in the intercell communication, activate metabolic processes and produce an overall biostimulation of the skin. They are structurally identical to the ones of our skin and for that reason they are able to participate in physiological mechanisms with a specific overall action.

**Sterile and pyrogen-free cosmetics.**

## XTRA FACE ANTIAGING vials

**Presentation:**  
5 vials x 5 cc.

**Active principles:**  
Vitamins, amino acids,  
coenzymes, minerals,  
nuclec acids,  
antioxidants, biomimetic  
peptides, sodium  
hyaluronate, DMAE.



FA

## Facial moisturiser / Anti-aging treatment.

**Indications:** Overall anti-aging effect:  
smooths wrinkles and fine lines,  
brightens skin, tightens skin pores,  
improves skin's texture and quality and  
reduces roughness.

**Instructions for use:** Each specialist  
will recommend the best technique to  
correctly apply the product.

## XTRA FACELIFT vials

**Presentation:**  
3 vials x 5 cc.

**Active principles:**  
Sodium hyaluronate,  
Hydrosoluble collagen,  
biomimetic peptides,  
Arginine.



FL

## Facial expression wrinkles.

**Indications:** Reduces facial expression  
wrinkles (glabellar, forehead and  
periorbital) produced by the constant  
repetition of movements caused by facial  
expression muscle contraction.

**Instructions for use:** Each specialist  
will recommend the best technique to  
correctly apply the product.

## XTRA HAIR RESTORER vials

**Presentation:**  
5 vials x 5 cc.

**Active principles:**  
Vitamins, amino acids,  
coenzymes, minerals,  
nuclec acids,  
antioxidants, biomimetic  
peptides, Hyaluronic acid  
(1.5%), Rutin, Ginkgo  
biloba, Camomile,  
Curcuma longa (Capilia  
Longa), Apigenine  
(Procapil), Aminobutyric  
acid (Gaba).



HR

## Hair strengthening.

**Indications:** Appropriate for all types of  
alopecia (affecting both men and  
women), restores hair quality, prevents  
hair loss and care dry, delicate and  
devitalised scalp. Improves problems  
brought on by alopecia in both men and  
women.

**Instructions for use:** Each specialist  
will recommend the best technique to  
correctly apply the product.

## XTRA LIGHTENING PLUS+ vials

**Presentation:**  
5 vials x 5 cc.

**Active principles:**  
Tranexamic acid, sodium hyaluronate, arbutin, ascorbic acid, glycyrrhiza glabra, dimethylmethoxy chromanyl palmitate, glutathion, biomimetic peptides.



LT

### Facial depigmenting.

**Indications:** Indicated for the treatment of skin with spots, matte skin with dyschromias of hormonal origin, excess of sunlight exposure or skin aging, and for skin's revitalisation and moisturisation. Regulates melanin synthesis. Reduces pigmentation, age spots and freckles.

**Instructions for use:** Each specialist will recommend the best technique to correctly apply the product.

## XTRA SKIN FIRMING vials

**Presentation:**  
5 vials x 5 cc.

**Active principles:**  
Vitamins, amino acids, coenzymes, minerals, nucleic acids, antioxidants, Sodium hyaluronate, DMAE, Hydrosoluble collagen, Organic silicon, biomimetic peptides.



SF

### Skin firming. (Face & body).

**Indications:** Indicated for skin flaccidity, physiological or caused by diets or weight loss treatments. Ideal as a firming treatment in common areas of the skin showing flaccidity signs and loss of muscular tone (face and body).

**Instructions for use:** Each specialist will recommend the best technique to correctly apply the product.

## XTRA SKIN REPAIR vials

**Presentation:**  
5 vials x 5 cc.

**Active principles:**  
Asian centella, organic silicon, troxerutin, hyaluronic acid, alaria esculenta, biomimetic peptides.



SR

### Skin repairing. (Face & body).

**Indications:** Indicated for oily skin, enlarged pores with matte-shiny dyschromias, as well as unaesthetic appearance. Post acne scars. Ideal for treating stretch marks of any aetiology. The skin gradually recovers its natural colour and progressively blends in with the surrounding skin.

**Instructions for use:** Each specialist will recommend the best technique to correctly apply the product.

## XTRA SLIMMING

vials

**Presentation:**  
5 vials x 5 cc.

**Active principles:**  
Plancton extract, sodium deoxycholate, Bacillus/soybean ferment extract, disodium adenosine triphosphate, adenosine phosphate, biomimetic peptides.



SL

## Reducer

**Indications:** Reduces localised adiposity: submental, double chin, abdomen, abdominal flanks, thighs, knee inner areas, arms, etc. Firming, re-densifying effects, defining shape affected by fat accumulations.

**Instructions for use:** Each specialist will recommend the best technique to correctly apply the product.







# ADVANCED DERMOCOSMETICS

These products are the result of market needs' research in order to offer a deeper solution to the aesthetic pathologies that we can treat with the *Xtra* line vials. Innovative and comprehensive formulas that boost the professional aesthetic treatments performed by Aesthetic Medicine professionals.

Our advanced dermocosmetics are boosted with biomimetic peptides that act in the most inner mechanisms of the cell physiology.

**Dermatologically tested.**



## XTRA FACE ANTIAGING cream

**Presentation:**  
50 ml glass jar.  
250 ml PP jar.

**Active principles:**  
Hyaluronic acid, DMAE,  
lactobionic acid, cupuaçu  
butter, chondroitin sulfate,  
lactic acid, lupinus albus,  
biomimetic peptides.



FA

## Moisturising - anti-wrinkle facial cream.

**Indications:** Indicated for the treatment of superficial wrinkles, expression lines, skin hydration and revitalisation. Biomimetic peptides act rejuvenating aged skin. Particularly indicated for an overall anti-aging effect.

**Instructions for use:** Morning and evening, prior cleansing face, neck and décolleté, apply a small quantity with the fingertips and gently massage until completely absorbed.

## XTRA FACE ANTIAGING serum

**Presentation:**  
50 ml glass bottle.

**Active principles:**  
Low, medium and high  
molecular weight  
hyaluronic acid,  
enteromorpha compressa  
extract, DNA-RNA,  
allantoin, ocimum  
sanctum leaf extract,  
silybum marianum fruit  
extract, croton lechleri  
resin extract, biomimetic  
peptides.



FA

## Global anti-wrinkle serum.

**Indications:** The combination of its natural active principles together with specific biomimetic peptides gives skin back a youthful, smooth and radiant look. Intensely hydrates and reduces wrinkles, puffiness under the eyes, eyebags and expression wrinkles. Provides strong anti-oxidant protection against damage caused by free radicals and environmental damage.

**Instructions for use:** Morning and evening, on skin cleaned from make-up, properly cleansed and degreased, apply some drops of the serum on face and neck by means of a gentle massage, starting at the centre of the face and moving towards the exterior.

## XTRA FACELIFT serum

**Presentation:**  
30 ml glass bottle.

**Active principles:**  
Ascorbyl glucoside,  
methyl glucoside  
phosphateproline  
lysinecopper complex,  
ulmus extract, sodium  
hyaluronate  
crosspolymer, biomimetic  
peptides.



FL

## Specific treatment for facial expression wrinkles.

**Indications:** Intensive serum particularly indicated for the correction of expression wrinkles: periorbital, glabellar, forehead, eye bags and dark circles. Hydrates immediately, strengthens delicate areas and provides the skin with a fresh and bright appearance.

**Instructions for use:** Morning and evening, prior cleansing the area, apply some droplets of serum with fingertips to the area with gentle circular massages until its complete absorption.

## XTRA LIGHTENING PLUS+ cream

**Presentation:**  
50 ml glass jar.

**Active principles:**  
Tranexamic acid, arbutin, glycyrrhiza glabra root extract, salicylic acid, azelaic acid, liposomal kojic acid, phytic acid, citric acid, niacinamide, resorcinol, actinidia chinensis, sophora flavescens, tocopherol, nonapeptide-1.



LT

**Clarifying and skin tone corrector cream.**

**Indications:** Depigmenting cream for daily use. Indicated for the treatment of skin with age spots, dyschromias of hormonal origin or pregnancy, skin aging or due to excess of exposure to sunlight.

**Instructions for use:** Morning and evening, prior cleansing the affected area, apply with fingertips until its complete absorption.

## XTRA LIGHTENING PLUS+ serum

**Presentation:**  
30 ml glass bottle.

**Active principles:**  
Tranexamic acid, nonapeptide-1, rumex occidentalis extract, glycyrrhiza glabra root extract, aminoethylphosphinic acid, 4-Butylresorcinol, bacillus ferment, citrus unshiu, vitamin C.



LT

**Intensive depigmenting and clarifying serum.**

**Indications:** Indicated for the treatment of skin with spots, matte skin with dyschromias of hormonal origin, by excess of exposure to sunlight, or due to skin aging and freckles.

**Instructions for use:** Morning and evening, prior cleansing the affected area, apply some droplets of serum with fingertips with gentle massages until its complete absorption.

## XTRA SKIN FIRMING cream

**Presentation:**  
50 ml glass jar.  
250 ml PP jar.

**Active principles:**  
High molecular weight hyaluronic acid, shea butter, vitamin E, organic silicon, hydrolyzed soy flour, palmitoyl tripeptide-38, milk peptides complex, cooper tripeptide-1.



SF

**Firming facial and body cream.**

**Indications:** This nutritive and soft cream, of rich texture, provides the skin its natural density and elasticity, helping to restore its firmness, smoothness and tight appearance. Prevents and treats skin sagging due to physiological circumstances and weight loss treatments, pregnancy, aging and chiralurgical or aesthetic treatments.

**Instructions for use:** Apply morning and evening with a gentle massage to the affected area.

## XTRA SKIN REPAIR

cream

### Presentation:

50 ml glass jar.  
250 ml PP jar.

### Active principles:

Glycolic acid, malic acid, tartaric acid, lactic acid, citric acid, hyaluronic acid, elastomer HIP emulsion, vegetable escualene, lupinus albus, argan oil, rutin, organic silicon, phaseolus lunatus extract, palmitoyl tetrapeptide-7.



SR

## Skin repairing cream.

**Indications:** Imperfections, irritated, irregular skin. Enlarged pores, oily and shiny skin (homogenising and mattifying effect). Acne scars. Erythema due to injuries. Stretch marks from any aetiology. Skin recovers its silky and velvety appearance.

**Instructions for use:** Morning and evening, prior cleansing the skin, apply a small quantity with fingertips using gentle circular movements until completely absorbed.

## XTRA SKIN REPAIR

serum

### Presentation:

30 ml glass bottle.

### Active principles:

Combination of hyaluronic acids of different molecular weights, organic silicon, lactic acid, rutin, sorbic acid, Hydroxycitronellal, tocopherol, palmitoyl tetrapeptide-7, palmitoyl tripeptide-1, phaseolus lunatus seed extract, oligopeptide-1.



SR

## Skin repairing serum.

**Indications:** Reduces pore size, smooths and regenerates skin from damage caused by atmospheric factors and acne background, reduces acne irritations, homogenises skin, softens shiny areas and imperfections. Brings back skin's natural luminosity, silky and velvety appearance.

**Instructions for use:** Morning and evening, prior cleansing the skin, apply a few drops with fingertips using circular movements until completely absorbed.

## XTRA SLIMMING

serum

### Presentation:

30 ml glass bottle.

### Active principles:

Sodium hyaluronate crosspolymer, heliantus annuus seed oil and lupinus albus seed extract, sarcocapnos crassifolia callus lysate, gold 24 K, acetyl tetrapeptide-2, mannose-6-phosphate.



SL

## Multi-peptide reducer serum.

**Indications:** Reduces localised adiposity. Firming and re-densifying effect. Induces collagen and skin structural material formation preventing flaccidity as a result after lipolysis. Great effect defining shape affected by fat accumulations.

**Instructions for use:** Morning and evening, prior cleansing area to be treated, apply with fingertips some droplets with gentle circular massage until its complete absorption.

**XTRA  
HAIR RESTORER**  
lotion

**Presentation:**  
50 ml glass bottle.

**Active principles:**  
Gamma butyric acid,  
Curcuma Longa  
extract, Natural  
oleanolic acid,  
Apigenin, Biotynyl  
peptide - GLY - HIS -  
LYS, Optapeptide-12.



**Anti hair-fall and fortifying lotion.**

**Indications:** Indicated for all types of alopecia (male and female), hair quality restoration, hair loss prevention and protection of dry, brittle and devitalized scalp. Also recommended for hair loss problems, weakness and fragility of eyebrows and eyelashes. Complementary home treatment to the professional treatment with **XTRA HAIR RESTORER VIALS**.

**How to use:** Gently massage the product into dry hair once or twice a day using the contents of two pipettes of the product.

**HAND CARE**  
cream

**Presentation:**  
100 ml tube.

**Active principles:**  
Citrus unshiu peel  
extract, Low weight  
hyaluronic acid, Karité  
butter, Almonds oil,  
Nonapeptide-1, Acetyl  
hexapeptide-8.



**Intensive hand cream.**

**Indications:** Moisturising hand cream with a complete innovative formulation based on powerful biomimetic peptides with anti-aging effects. fights against the appearance of wrinkles and spots. Quickly absorbed, clarifying and very nutritive, delicately perfumed.

**Instructions for use:** Recommended to be applied several times a day. Apply after cleansing and properly drying, with a gentle massage to the palm and back to the hand.

*The SIMILDIET™ Xtra line is formulated with the combination of traditional active principles and innovative biomimetic peptides that act in the most inner mechanisms of cell physiology.*



**SIMILDIET**  
LABORATORIOS

**SERUM INTENSIVE**  
**Metabolites™**

Reductor.  
Reductor.

PROFESIONAL USE ONLY 20

**M**

20

20



**SIMILDIET**  
LABORATORIOS

**SERUM INTENSIVE**  
**Lipotrofin™**

Anticelulítico.  
Anti-celulite.

PROFESIONAL USE ONLY 20

**L**

20



**SIMILDIET**  
LABORATORIOS

**SERUM INTENSIVE**  
**Condrotrofin™**

Regenerador.  
Regenerador.

PROFESIONAL USE ONLY 20

**C**

20



**SIMILDIET**  
LABORATORIOS

**SERUM INTENSIVE**  
**Musclicleg™**

Reafirmante.  
Firming.

PROFESIONAL USE ONLY 20

**M**

20





# SERUM INTENSIVE line

*Safe and effective solutions for our professionals.*

**SIMILDIET™** seeks the highest quality of its products and the total absence of iatrogenesis. From the first beginning of the link of a special development we require the maximum care on every detail that will define the maximum quality concept.

Serum Intensive products contain no preservatives or colouring.

*Combinable among each other, they offer a wide range of possible actions.*

**Sterile, pyrogen-free products.**

# Condrotrofin™ serum intensive

Regenerator.

*Aqua, Sodium chloride, Symphytum officinale leaf extract, Arnica montana, Spiraea ulmaria extract.*

**Indications:** Indicated as a musculoskeletal degenerative and traumatic injuries regenerator, as well as a sports-related injuries regenerator.

**Presentation:**  
Box containing 20 ampoules of 2 ml each.

**Instructions for use:** Each specialist will recommend the best technique to correctly apply the product.



# Lipotrofin™ serum intensive

Anti-cellulite.

*Aqua, Sodium chloride, Aesculus hippocastanum extract, Juglans regia seed extract, Tyrosine.*

**Indications:** Anti-cellulite action. Indicated in the treatment of soft, compact, hard or edematous cellulite.

**Presentation:**  
Box containing 20 ampoules of 2 ml each.

**Instructions for use:** Each specialist will recommend the best technique to correctly apply the product.





# Metabolites™ serum intensive

Reducer.

*Aqua, Sodium chloride, Fucus vesiculosus extract, Tyrosine, Adenosine phosphate, Disodium adenosine triphosphate.*

**Indications:** Lipolytic. Indicated as adjuvant in the treatment of obesity in all its forms and manifestations (general and localised, predominantly gynoid or android).

**Presentation:**  
Box containing 20 ampoules of 2 ml each.

**Instructions for use:** Each specialist will recommend the best technique to correctly apply the product.



# Musclebig™ serum intensive

Firming.

*Aqua, Sodium chloride, Hydrolysed collagen, Magnesium gluconate, Manganese gluconate, Ascorbic acid, Niacinamide, Thiamine HCL, Riboflavin, Pyridoxine, Citric acid, Malic acid, Cysteine, Nicotinamide adenine dinucleotide, Coenzyme A.*

**Indications:** Aesthetic Medicine, Sports Medicine and Pain Management. In all cases where an increase of mass synthesis and muscular strength is needed; anti-flaccidity complement and general revitalising.

**Presentation:**  
Box containing 20 ampoules of 2 ml each.

**Instructions for use:** Each specialist will recommend the best technique to correctly apply the product.



**5 años**  
1998-2003

**ION**

**SIMDIET**  
LABORATORIOS

Proceuticas

**Lipotrofin™**

especial electrostática

Medicamento de uso veterinario. No se debe usar en personas.  
Medicamento de uso veterinario. No se debe usar en personas.

**5 años**  
1998-2003

**ION**

**SIMDIET**  
LABORATORIOS

Proceuticas

**Musclebig™**

especial electrostática

Medicamento de uso veterinario. No se debe usar en personas.  
Medicamento de uso veterinario. No se debe usar en personas.

**5 años**  
1998-2003

**ION**

**SIMDIET**  
LABORATORIOS

Proceuticas

**Metabolites™**

especial electrostática

Medicamento de uso veterinario. No se debe usar en personas.  
Medicamento de uso veterinario. No se debe usar en personas.





# ION line

The **SIMILDIET™ ION** line contains products enriched with hyaluronic acid and is designed to be used with the most modern transdermal vehiculisation systems, as well as with the classic Aesthetic Medicine electromedicine systems.

**Hydrosoluble products, combinable among each other, they offer a wide range of possible actions.**

## Microcirculatory and anti-cellulite.

### Anti-cellulite joint action:

- Lymphokinetic.
- Anti-oedematous.
- Fibrinolytic.
- Vasoprotector.

**Active principles:** Sodium hyaluronate, Hedera helix, Ruscus, Ginkgo biloba, Horse chestnut, Hamamelis, Horsetail, Centella asiatica, Vitis vinifera.

**Presentation:** Box containing 5 vials of 10 ml each.

**Instructions for use:** Each specialist will recommend the best technique to correctly apply the product.

ION  
Lipotrofin™



## Lipolytic and reducer.

### Reducer joint action:

- Phosphodiesterase inhibition.
- Lipolytic chain activation.
- Local metabolic stimulus.
- Restructuring.

**Active principles:** Sodium hyaluronate, Green tea, Caffeine, Fucus, Laminaria, Ubiquinone.

**Presentation:** Box containing 5 vials of 10 ml each.

**Instructions for use:** Each specialist will recommend the best technique to correctly apply the product.

ION  
Metabolites™



## Firming and anti-flaccidity.

### Firming joint action:

- Regenerative.
- Revitalising.
- Moisturising.
- Antioxidant.
- Cell metabolic protective.

**Active principles:** Sodium hyaluronate, Elastin, Enteromorpha compressa, Proline, Cystine, Caesalpinia spinosa, Vitamins B1, B2 and B6, Ubiquinone.

**Presentation:** Box containing 5 vials of 10 ml each.

**Instructions for use:** Each specialist will recommend the best technique to correctly apply the product.

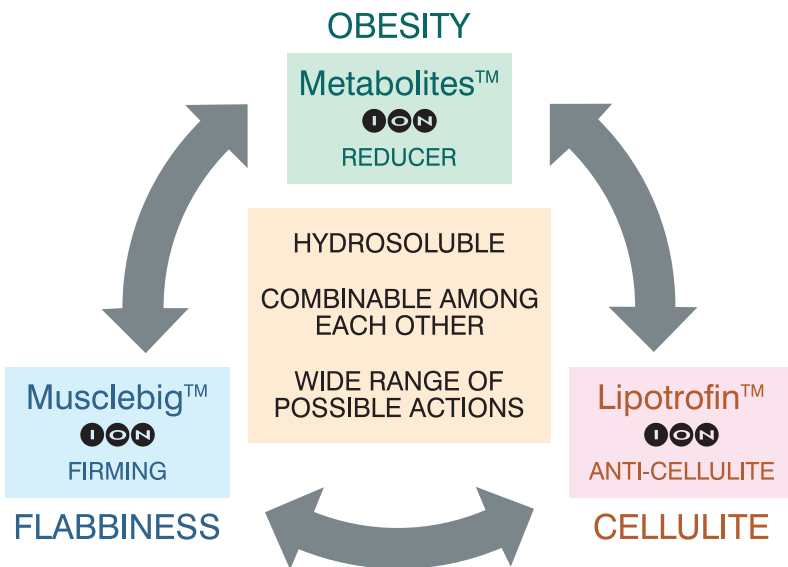
ION  
Musclebig™





line

*A solution...  
... for each aesthetic problem.*



## Basic Face Antiaging

Basic Face Antiaging

SIMILDIET  
LABORATORIOS

## Hyaluronic acid 3%

Ácido hialurónico 3%

SIMILDIET  
LABORATORIOS

## Idebenone

Idebenona

SIMILDIET  
LABORATORIOS

## Artichoke

(Cynara Scolymus)

Alcachofa

SIMILDIET  
LABORATORIOS

## Caffeine 2.5%

Cafena 2.5%

SIMILDIET  
LABORATORIOS

## D.M.A.E.

Dimethyl Mea

SIMILDIET  
LABORATORIOS

## DNA 3

(Hyaluronic, Collagen, RNA and DNA)

DNA 3

(Hialurónico, Colágeno, ARN y ADN)

SIMILDIET  
LABORATORIOS

## L-Carnitine 20%

L-Carnitina 20%

SIMILDIET  
LABORATORIOS

## Organic silicon 1%

Silicio orgánico 1%

SIMILDIET  
LABORATORIOS



# *Basic* line

With its new *Basic* line **SIMILDIET™** offers cosmetic solutions for face and body treatments by means of a comprehensive range of professional use products.

These highly effective products of maximum quality are designed to be topically applied, especially with the following beauty vehiculisation systems used in Aesthetics: ultrasounds, transdermal electroporation, iontophoresis, depressotherapy, vacuumtherapy, radiofrequency.

*Combinable among each other,  
they offer a wide range of possible actions.*

**Sterile and pyrogen-free cosmetics.**

## BASIC ARTICHOKE



**Reducer of localised fat deposits / Cellulite in all its forms and degrees of evolution.**

Traditional product for cellulite treatment. Choleric effect, hepatoprotector, desintoxicant, lipolytic, draining, etc.

Ideal to be combined with other direct lipolytic (Organic silicon, Caffeine, L-Carnitine) and circulatory solutions in any cellulite treatment.

**Active principles:** Cynara scolymus leaf extract.

**Presentation:** Box containing 20 ampoules of 2 ml each.

**Instructions for use:** Each specialist will recommend the best technique to correctly apply the product.

## BASIC CAFFEINE 2.5%



**Reducer of localised fat deposits / Cellulite in all its forms and degrees of evolution.**

Direct lipolytic: inhibits phosphodiesterase, which stimulates the intra-adipocyte concentration of cAMP that stimulates triglyceridolipase, the enzyme responsible for the breakdown of triglycerides into easily removable fatty acids and glycerol.

Classic product in lipolytic actions in localised obesity and anti-cellulite treatments with great fat component.

Usually associated with other direct lipolytics such as Artichoke, L-Carnitine, Organic silicon, etc.

**Active principles:** Caffeine.

**Presentation:** Box containing 20 ampoules of 2 ml each.

**Instructions for use:** Each specialist will recommend the best technique to correctly apply the product.

## BASIC DMAE



**Skin flaccidity / Lack of elasticity and flexibility of cutaneous tissues.**

This solution is a precursor to acetylcholine. Responsible for muscle contraction. It acts on muscle fibres making them firmer and improving their tone. Great anti-flaccidity effect. Immediate lifting action and long-term firming effect.

It can be used with Hyaluronic acid 3%, Idebenone and DNA 3 in standard anti-aging, anti-wrinkles and anti-flaccidity treatments.

**Active principles:** Dimethylaminoethanol tartrate.

**Presentation:** Box containing 20 ampoules of 2 ml each.

**Instructions for use:** Each specialist will recommend the best technique to correctly apply the product.



## BASIC DNA 3



### Facial moisturiser.

Low molecular weight hyaluronic acid 1 % + plant collagen 1 % + DNA 1 %. Highest hydration. Triple strengthener in anti-aging treatments. Antioxidant. Regenerating and firming.

DNA 3 can also be combined with DMAE and Idebenone in anti-aging, antioxidant and firming treatments.

It can be used as a daily treatment. Apply directly to face and gently massage with circular movements until its complete absorption.

**Active principles:** Hyaluronic acid, Plant collagen, RNA and DNA hydrolysates.

**Presentation:** Box containing 20 ampoules of 2 ml each.

**Instructions for use:** Each specialist will recommend the best technique to correctly apply the product.

## BASIC FACE ANTIAGING



### Facial hydrating and rejuvenating treatment.

It contains basic and fundamental active ingredients which are essential for an overall, effective and anti-aging facial treatment: Hyaluronic acid 3%, Organic silicon and DMAE.

Complete anti-aging effect: regenerating, repairing, antioxidant, restructuring, hydrating, toning, tautening and anti-flaccidity.

Particularly indicated in anti-aging treatments: smooths wrinkles, brightens skin and tightens skin pores, improving skin texture, quality and freshness.

It may be combined with Idebenone to achieve optimal results.

**Active principles:** Sodium hyaluronate, Methylsilanol mannuronate, Dimethyl mea.

**Presentation:** Box containing 5 vials of 5 ml each.

**Instructions for use:** Each specialist will recommend the best technique to correctly apply the product.

## BASIC HYALURONIC ACID 3%



### Facial moisturiser / Skin aging.

Its function is to maintain the optimum moisture level of tissues, thus avoiding elasticity loss and boosting the production of collagen and elastin, key components of the tissue.

The dermal tissue contains collagen fibers. Hyaluronic acid chains overlap with these fibers causing liquid retention and generating volume, therefore it is effective to smooth wrinkles.

Hyaluronic acid retains water in an equivalent percentage much higher than its weight. Restores fibres that support skin tissue.

Essential element in any anti-aging and fine wrinkle treatment. It can be perfectly combined with DMAE and Idebenone to achieve greater results.

**Active principles:** Sodium hyaluronate.

**Presentation:** Box containing 5 vials of 5 ml each.

**Instructions for use:** Each specialist will recommend the best technique to correctly apply the product.

## BASIC IDEBENONE



### Antioxidant / Photoaging / Moisturising.

One of the most antioxidant and powerful ingredients known in the market. Reduces the appearance of fine lines, decreases hyperpigmentation, increases cutaneous hydration and improves skin firmness as well as elasticity.

Depigmenting and clarifying action by inhibition of melanin synthesis through tyrosine blocking. Restores natural skin elasticity providing a more luminous, firm and smooth appearance.

Recommended to be used with all types of products of anti-aging and moisturising effect to strengthen its global effect (Hyaluronic acid 3%, Basic Face Antiaging, DNA3).

**Active principles:** Hydroxydecyl ubiquinone.

**Presentation:** Box containing 5 vials of 5 ml each.

**Instructions for use:** Each specialist will recommend the best technique to correctly apply the product.

## BASIC L-CARNITINE 20%



### Reducer of localised fat deposits.

For the process of fat entries into the lipolytic metabolic lines, a conveyor that carries them to their interior is necessary, it is L-Carnitine. Closes the circle of combustion of these fatty acids and prevents them from being converted back into triglycerides.

Excellent lipolysis indirect activator. Adjuvant of other direct lipolytic products such as Caffeine, Artichoke or Organic silicon, with which it can be combined perfectly.

**Active principles:** Carnitine.

**Presentation:** Box containing 20 ampoules of 2 ml each.

**Instructions for use:** Each specialist will recommend the best technique to correctly apply the product.

## BASIC ORGANIC SILICON 1%



### Skin regenerator / Lipolytic.

Structural element of the conjunctive tissue, which is at the same time part of macromolecules such as elastin, collagen, proteoglycans and structural glycoproteins. Induces control and favours the spread of fibroblasts as well as the regeneration of collagen and elastin.

Metabolic protector acting at different levels. Fights against lipid peroxidation, responsible for the release of free radicals. Fights against nonenzymatic glycosylation of proteins which constitute the conjunctive tissue. Avoids the destruction of macromolecules. Powerful lipolytic action. Its lipolytic action is seven times higher than other lipolytics used in anti-cellulite treatments, therefore, is normally used together with them in anti-cellulite treatments and localised fat deposits.

**Active principles:** Methylsilanol mannuronate.

**Presentation:** Box containing 20 ampoules of 2 ml each.

**Instructions for use:** Each specialist will recommend the best technique to correctly apply the product.



***With our *Basic* line we offer our clients the classical active principles for Aesthetic Medicine treatments.***



# ENZYME





*enzyme*  
line

Enzymes are complex protein molecules that act as biocatalysts in a multitude of chemical reactions in our bodies.

They are widely used in aesthetic medicine treatments.

Presented in lyophilized powder format, it consists of three products:  
**Collagenase 150 IU, Lipase 1.500 IU and Hyaluronidase 1.500 IU.**

## BASIC enzyme COLLAGENASE 150 IU



### Restructuring / Anti-cellulite.

Participates in physiological processes of which depends on the integrity of collagen or its fibrillar rearrangement.

Its main function is the normal replacement of collagen, but its activity is increased to get the remodelling of extracellular matrix.

Acts selectively on amorphous collagen fibres causing its own restructuring thanks to the great activation of fibroblasts.

**Active principles:** Mannitol, r-Clostridium histolyticum collagenase G, Sodium hyaluronate.

**Indications:** Hard cellulite, fibrous cellulite, with nodules. Orange peel skin.

**Presentation:** Box containing 5 vials of lyophilized powder.

**Instructions for use:** Each specialist will recommend the best technique to correctly apply the product.

## BASIC enzyme LIPASE 1.500 IU



### Intensive reducer.

It has a great direct lipolytic effect over accumulated fat catalysing and dissolving triglyceride deposits and when liquefying them, facilitates their elimination through the lymphatic system.

**Active principles:** Mannitol, Lipase, Sodium hyaluronate.

**Indications:** Adipose cellulite, localised fat accumulation, remodelling.

**Presentation:** Box containing 5 vials of lyophilized powder.

**Instructions for use:** Each specialist will recommend the best technique to correctly apply the product.

## BASIC enzyme HYALURONIDASE 1.500 IU



### Draining / Anti-cellulite.

Responsible for the enzymatic degradation of glycosaminoglycans, hydrolyses hyaluronic acid, increases the permeability of the skin and connective tissue.

Acts selectively on polysaccharide polymers. Digests polymerised sugars responsible for water retention. Great arterio-veno-lymphatic microcirculation. Improves significantly lymphatic drainage.

Facilitates the diffusion of other products thanks to its permeability effect, to integrate them into the dermis and to help eliminate them.

**Active principles:** Mannitol, Hyaluronidase, Sodium hyaluronate.

**Indications:** Oedematous cellulite, lymphedema, eliminates the iatrogenic effect caused by cross-linked hyaluronic acid filler treatments.

**Presentation:** Box containing 5 vials of lyophilized powder.

**Instructions for use:** Each specialist will recommend the best technique to correctly apply the product.

# BOOSTERS



***The SIMILDIET™ Basic enzyme line can be reconstituted with other products from our Basic line to enhance its therapeutic effects. Artichoke will increase its lipolytic and draining potential, Caffeine as direct lipolytic and Organic Silicon as regenerating and restructuring.***



### Yellow peel

Mascarilla de abrasi3n qu3mica  
1% Acido trichloroac3tico  
17% Acido salic3lico  
5% Acido l3ctico  
0,2% Hidr3xido de potasio  
pH 5,5  
Nº de Reg. AEMPS 527 PE

### Argilac mask

Piel sensible  
Sensative skin.  
25% Argilina  
13,5% Acido l3ctico  
1% Vitamina K1  
pH 5,5

### Peeling Glic3lico 70%

Mascarilla de abrasi3n qu3mica  
70% Acido glic3lico  
pH 0,6  
Nº de Reg. AEMPS 441 PE

### Peeling SAMA

Mascarilla de abrasi3n qu3mica  
22% Acido mand3lico  
20% Acido salic3lico  
pH 1,6  
Nº de Reg. AEMPS 571 PE

### Lightening peel

Mascarilla de abrasi3n qu3mica  
40% Acido glic3lico  
7% Acido trichloroac3tico  
5% Acido salic3lico  
4% Acido l3ctico  
2% Acido mand3lico  
pH 1,6  
Nº de Reg. AEMPS 571 PE

### Peeling Azelaico

Mascarilla de abrasi3n qu3mica  
20% Acido azelaico  
2% Acido salic3lico  
3% Acido l3ctico  
1% Argilina  
pH 2,2  
Nº de Reg. AEMPS 443 PE

### Peeling Mand3lico

Mascarilla de abrasi3n qu3mica  
50% Acido mand3lico  
2% DMAE  
pH 3,3  
Nº de Reg. AEMPS 440 PE

### Peeling Ferrulico

Mascarilla de abrasi3n qu3mica  
8% Acido ferrulico  
5% Acido salic3lico  
5% Acido l3ctico  
pH 2,4  
Nº de Reg. AEMPS 442 PE



# **SIMILDIET** Professional Peelings



Chemical peels are dermatological treatments based on skin's ability to regenerate after a destruction (more or less intense) of its superficial layers.

**SIMILDIET™** offers a peeling comprehensive system designed specifically to treat skin imperfections, from moderate to severe, including photoaging, fine lines and wrinkles, flaccidity, pigmentation, seborrheic skin, acne and scars.

**Our chemical peels are registered within the Spanish Agency of Medicines and Medical Devices.**



## Az Azelaic peel

- Indicated in oily and acne skin.
- Enlarged, open pores.
- Skin troubled with zits, shiny areas, pimples and blackheads.

60 ml glass bottle.  
Nº. de Reg. AEMPS 443-PE  
pH 3.2  
*Azelaic acid 20%, Lactic acid 3%, Salicylic acid 2%, Arnica 1%.*

**Anti-inflammatory, bacteriostatic, comedolytic, germicide, exfoliating, mattifying and fungicide properties (decreases skin oil concentration).**



## Fr Ferulic peel

- Skin aged by sun, wind, weather and tobacco.
- Devitalised skin, dull, lacking in luminosity, rough.
- Sensitive skin with microcirculatory alterations, highly reactive, with telangiectasias or small dilated superficial veins.

60 ml glass bottle.  
Nº. de Reg. AEMPS 442-PE  
pH 2.4  
*Ferulic acid 8%, Malic acid 5%, Citric acid 5%, Lactic acid 5%.*

**Great antioxidant, moisturising and anti-aging power. Stimulates the synthesis of collagen.**



## Gc Glycolic peel 70%

- Flaccid, toneless and saggy skin.
- Aged skin with spots.
- Fine wrinkles.
- As clarifying and depigmenting.
- Matte, lightless, with dyschromia and irregular skin, with post-acne or post-scar pigmentation.
- Dirty appearance and devitalised skin.
- Thick, hyperkeratotic skin.

60 ml glass bottle.  
Nº. de Reg. AEMPS 441-PE  
pH 0.6  
*Glycolic acid 70%.*

**Great anti-aging effect, melanogenesis inhibitor and skin brightening effect. Exfoliating, keratolytic, regenerating.**



## Md Mandelic peel

- Flaccid, toneless and saggy skin.
- Rosacea.
- Acne skin.
- Photo-ageing.
- Dyschromia.

60 ml glass bottle.  
Nº. de Reg. AEMPS 440-PE  
pH 3.3  
*Mandelic acid 50%, DMAE 2%.*

**Tightening effect - anti-flaccidity and flabbiness. Firming, moisturising, revitalising.**



## Yw Yellow peel

- Treatment of hyperchromic spots (sun, hormonal or aging).
- Integral facial rejuvenation.
- Fine wrinkles.
- Acne scars.
- Skin stretch-marks.
- Devitalised skin, lightless, matte, with non-uniform or discolored coloration.

5 ml glass vial.  
Nº. de Reg. AEMPS 527-PE  
pH 0.5

*Resorcinol 14%, Trichloroacetic acid 14%, Lactic acid 13%, Salicylic acid 5%, Retinol 0,1%.*

**It is a type of chemical peel especially designed to be applied exclusively to the pigmented area that we intend to treat. It has an intense clarifying and depigmenting effect.**



## Sm SAMA peel

- Comedogenic acne, medium level cystic acne or pimples.
- Oily skin with enlarged pores.
- Post-acne scars.
- Seborrhic dermatitis.
- Exfoliating and skin tone homogenising.
- Decreases spots intensity.
- Skin aged due to sun damage.
- Improves fine facial wrinkles.

60 ml glass bottle.  
Nº. de Reg. AEMPS 571-PE  
pH 1.6

*Mandelic acid 22%, Salicylic acid 20%.*

**Mandelic acid with great bactericidal effect is particularly indicated for oily skin, with enlarged pores, pimples or acne.**

**Salicylic acid has a high keratolytic power and regulates sebaceous secretion.**



## Ag Argilac Mask

60 ml glass bottle.

pH 5.5

*Arginine 25%, Lactic acid 13.5%, Pyruvic acid 1%, Vitamine K1 oxide 1%.*

- For sensitive, intolerant, delicate and itchy skin.
- Ideal for young skin that want to have their first facial cares.
- Recommended to tackle problems such as eye bags and swollen eyelids.



**Moisturising, regenerating, anti-inflammatory, sebostatic, bactericide, antioxidant, clarifying, depigmenting, decongestant and firming mask.**



## Lt Lightening peel

60 ml glass bottle.

Nº. de Reg. AEMPS 597-PE

pH 1.5

*Glycolic acid 49%, Kojic acid 7%, Tranexamic acid 5%, Citric acid 4%, Lactic acid 3%, Salicylic acid 2%.*

- Flaccid, toneless and saggy skins.
- Aged skin with spots.
- Fine wrinkles.
- As clarifying and depigmenting.
- Matte, lightless, with dyschromia and irregular skin, with post-acne or post-scar pigmentation.
- Dirty appearance and devitalised skins.
- Thick, hyperkeratotic skins.
- For body use in intimate areas, armpits, elbows, knees, groins and friction areas.

**Great depigmenting effect, melanogenesis inhibitor and skin brightening effect. Exfoliating, keratolytic, regenerating. Tranexamic acid is a strong inhibitor of tyrosinase with a powerful depigmenting effect, even in cases of melasma.**



# Pre-treatment



# Post-treatment





---

# DERMOCOSMETICS

**SIMILDIET™** offers effective cleansing and degreasing lotions designed and developed with the same advanced technology as the most innovative beauty products. No matter the skin type, daily cleaning is essential for the effectiveness of every treatment, as a clean skin is more receptive to cosmetic products.

Once the skin is properly cleaned, our creams and gels are the best complements to boost the actions of the techniques used in Aesthetic Medicine, Sports Medicine and Pain Therapy.

**Professional use and home treatment.**

# MICELLAR CLEANSING WATER

*Aqua, Pentylene glycol, Glycereth-26, Sodium olivamphoacetate, Tetrasodium edta.*

**Lotion specially designed for a proper makeup removal and deep cleansing of the skin. Thanks to its micellar structure, when contacting the fat and impurities from skin, it covers and isolates them to allow a complete removal without leaving any residue.**

- It gently cleanses and removes makeup without irritating the skin, even with waterproof make-up.
- Triple moisturising, toning and cleansing effect.
- The product allows the skin to breathe properly.
- It can be used as sole product for facial hygiene.
- Suitable for all skin types, even intolerant skin.
- Without preservatives, allergens or alcohol.

400 ml and 100 ml bottles.



# DEGREASING LOTION

*Aqua, Acetone, Hydrolysed soy protein, Butylene glycol, Phenoxyethanol, Potassium sorbate, Trisodium edta, Biotin, CI 42090, CI 19140.*

**Degreasing solution, oxygenating and light exfoliating action.**

- Indicated for all skin types, including oily and acneic skin.
- It eliminates the hydrolypidic layer leaving the skin free of incrustations, impurities and dead cells.
- When liberating the skin, facilitates the absorption and provides a greater and uniform contact with the treatment products (peels, alpha hydroxy acids, anti-aging treatments, etc.).
- Hydrolysed soy protein increases mitochondrial metabolism and stimulates fibroblasts growth. It acts repairing the effects of aging, softening the skin and reducing skin roughness.

400 ml and 100 ml bottles.



# CONDRO GEL

*Harpagophytum procumbens, Aloe barbadensis, Camphor, Menthol, Mimosa tenuiflora, Arnica montana, Calendula officinalis.*

**Gel recommended for direct and immediate relief of painful processes related to the locomotor system.**

- Recovery gel, cold-hot effect.
- It can also be applied for muscular preparation and warming up prior to exercise.

**Application:**

Apply with a gentle massage to the affected area.

200 ml tube.





# SUN CARE & SUN CARE color

## Very high protection sunscreen.

Combination of two highly effective, broad-spectrum filters: Titanium dioxide and zinc oxide. High purity niacinamide, carnosine, silymarin and tocopherol in liposomal preparation and bisabolol.

- Extreme sun protection UVA (13.22) – UVB, SPF 50+ and blue light filter.
- Maximum hydration. Prevents and repairs sun damages (DNA repair). Increases collagen synthesis.
- Soothing, epithelial regenerating and anti-sunburn properties.
- High substantivity, very easily absorbed.
- Offers an elegant feel with a nice, soft and smooth finish. Unscented.
- Home treatment to complement photoepilation treatments (Laser/IPL) and skin renewal treatments (peels, photo-rejuvenation, etc.).

50 ml. airless.



# SIMIL CARE

**Cream that restores and maintains the barrier function. Presents a softening, lenitive, anti-erythema, anti-inflammatory, soothing, regenerating and healing action.**

*BPS (Brassica campestris sterols), Hydrolysed silk, Allantoin, Panthenol, Wheat germ oil, Cupuaçu butter.*

- Restructures the damaged lipid barrier to re-establish smoothness, elasticity and physiological function.
- Physiologically regenerates and moisturises any skin type.

**Indications:** Whenever a soothing, hydrating, regenerating, anti-erythema and lenitive action is required.

*We can use SIMIL CARE as a mask after facial and body aesthetic treatments.*

*We will apply a layer to the affected area and leave it for 10 to 15 minutes.*

*We will remove it partially and gently massage until its complete absorption.*

50 ml tube.

300 ml white HPDE container.



# LIPOTROFIN cream

**Toning, slimming and anti-cellulite cream with remodeling effect.**

*Organic silicon, Theophylline, Hamamelis, DMAE, Hedera helix, Ruscus, Hippocastanum, Vitamin E.*

- Improves blood and lymphatic flow, thus helping within the triglyceride degradation.
- Improves skin texture.
- Increases elasticity.
- Reduces volume and "orange skin".

200 ml tube.



**Adelplus™**

Complemento alimenticio.  
Food supplement.

**SCT**

60 cápsulas

**Xtra**

SKIN & HAIR

RENEWAL TABLETS

colágeno  
HIALURÓNICO  
resveratrol  
COENZIMA Q10  
VITAMINAS  
aminoácidos  
minerales

60 tablets

Contiene 10 mg de resveratrol por tableta.  
Contains 10 mg of resveratrol per tablet.

**Bhioerba™**

Complemento alimenticio.  
Food supplement.

**HB**

60 cápsulas

**Lipotrofin™**

Complemento alimenticio.  
Food supplement.

60 cápsulas

**Metabol**

Complemento alimenticio.  
Food supplement.

**TMG**

60 cápsulas

**K-LINFO & B's**

60 cápsulas

**Vacirton™**

Complemento alimenticio.  
Food supplement.

**RVT**

**Condro cápsulas**

Complemento alimenticio.  
Food supplement.

60 cápsulas

**SIMILDIET LABORATORIOS**

**Distonicum™**

Complemento alimenticio.  
Food supplement.

30 cápsulas

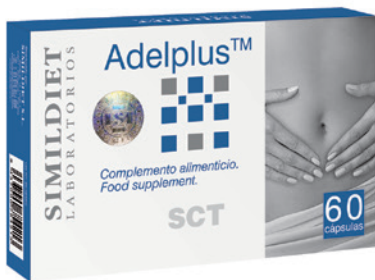
**SIMILDIET LABORATORIOS**

# NUTRACEUTICALS

**SIMILDIET™**'s food supplements have the aim to complement the usual diet. They consist of concentrated sources of nutrients or other substances with a nutritional or physiological effect: medicinal plants, minerals, vitamins and amino acids.

Our food supplements appear in a dose form (capsules)  
or in a bottle with eyedropper.

**They have been specifically developed to close  
the circle of our in-out integral therapy.**



## ADELPLUS™

**Is a complete natural diet complement with active principles which have completely shown their efficiency and safety in supporting weight loss in a healthy way.**

*Glucomanan, Garcinia cambogia, Citrus aurantium, L-Carnitine, Chromium picolinate, Potassium sorbate.*

- Natural and totally safe suppressant.
- Thermogenic.
- Activates fat combustion.
- Inhibits fat and sugar absorption.

*Box containing 60 capsules.*



## BHIOERBA 1 HB™

**Is a food supplement which combines in one single product all the active principles that ensure a good gastro - hepatobiliary functioning.**

*Dry nebulised extracts of: Holy thistle, Herb milk thistle, Artichoke, Black radish, Fennel, Mint, Sage and Dimethylsulfone.*

- Choleric, colagogue, carminative.
- Anti-dyspeptic, hepatic detox, general depurative.
- Especially in dietetic abuses and those of alcohol consumption.

*We recommend it in anti-obesity and anti-cellulite depurative treatments, and as a supplement in chemotherapy and anti-dyspeptic treatments.*

*Box containing 60 capsules.*



## CONDRO capsules

**Increases collagen and joint proteoglycans synthesis. Prevents joint degradation in degenerative joint diseases.**

*Avocado and soy extract rich in unsaponifiable matter, MSM, Hapragophytum, Bamboo.*

- Inhibition of pro-inflammatory cytokines.
- Increases collagen and joint proteoglycans synthesis.
- Prevents joint degradation in degenerative joint diseases.
- Post-traumatic recoveries, tendinitis and fibrillar lesion.

*Box containing 60 capsules.*



## DISTONICUM™

**Natural solution for the most common deficiencies. Stress, day-to-day tension, physiological losses, strict diets, physical exercise or intense intellectual demands can lead to an overall weakened physical and mental state.**

*Vitamins A, B1, B2, B6, B9, C, E, Alfalfa, L-cystine, L-cysteine, Eleutherococcus, Fenugreek, Horsetail, Hibiscus, Zinc, Iron, Copper, Rose hip, Coenzyme Q-10.*

- Iron-deficiency anaemia.
- Hypermenorrhoea or metrorrhagias.
- Flaking skin, nail fragility, cracked heels, skin hyperdryness.
- Weak hair, seasonal hair loss, androgenic alopecia and alopecia areata, weak and fragile scalp.

*Box containing 30 capsules.*



## XTRA SKIN & HAIR tablets

**Contains active ingredients that have proven to have an intense effect in combating the signs of skin ageing and the weakening of hair and nails.**

*Hydrolysed collagen, Zinc, Hyaluronic acid, Resveratrol, Bitter orange, Selenium, Coenzyme Q10, Vitamins, L-proline, L-lysine.*

- Reduces wrinkles and makes the skin smoother and softer.
- Protects the skin from free radicals and oxidative stress.
- Improves hair loss, thinning, loss of shine and hair breakage.
- Stimulates growth of nails. Improves brittle, weak, striated and fragile nails.
- Protects articular cartilage and musculoskeletal structures in all types of physical exercise.

*Box containing 60 tablets.*



## K-LINFO & B'S

**Draining, liquid mobiliser and anti-oedematous.**

*Potassium gluconate, Vitamins B1, B3, B5, B6, B9, B12.*

- Oedematous cellulite.
- Premenstrual oedematus syndrome.
- Lymphedema, oedema following any type of surgical procedure.
- Vascular oedemas.
- Lymphostatic oedemas of traumatic origin.

*60 ml bottle.*



## LIPOTROFIN™

**Dietary supplement that provides the active principles required for a powerful microcirculatory, draining, anti-cellulite effect, as well as a tissue restructuring effect.**

*Betula alba, Equisetum arvense, Bambusa arundinacea Retz (Wild), Camellia sinensis, Ruscus aculeatus.*

- Anti-cellulite.
- Draining.
- Restructuring.
- P vitamin action.
- Improves texture and "orange skin".

*Box containing 60 capsules.*



## METABOL

**Dietary supplement which, thanks to its thermogenic activity, regulates insulin levels and inhibits appetite. Supplement of choice in slimming diets.**

*Conjugated linoleic acid, L-Carnitine, Citrus aurantium, Coffea arabica, Theobroma cacao, Camellia sinensis, Chromium picolinate.*

- Appetite inhibitor.
- Increases fat oxidations in the muscles, thus decreasing body fat.
- Regulates glucose and insulin levels, thus enhancing combustion.
- By reducing lactic acid levels, it decreases the fatigue caused by exercise.
- Decreases cholesterol and triglycerides levels.

*Box containing 60 capsules.*



## VACIRTON™

**Improves the venous-lymphatic return. Capillary protector, improves heavy legs, redness, cramps, etc.**

*Resveratrol, Ruscus aculeatus, Aesculus hippocastanum, Hamamelis virginiana, Melilotus officinalis, Rutin, Vitamins A, B1, B2, B3, B6, B12, C, Ginkgo biloba, Vaccinium myrtillus, Vitis vinifera, Aloe barbadensis.*

- Improves the state of venous-lymphatic system return.
- Capillary protector.
- Significant improvement of the following symptomatology: heavy legs, tiredness, coldness, cramps and tingling in lower extremities.
- Cardio-vascular protector, antioxidant, anti-free radicals.

*Box containing 60 capsules.*





**Simildiet S.L. Laboratorios**  
C/ Cadena, 15-17. Local 1.  
Tel. +34 976 371 332  
[simildiet@simildiet.com](mailto:simildiet@simildiet.com)

